

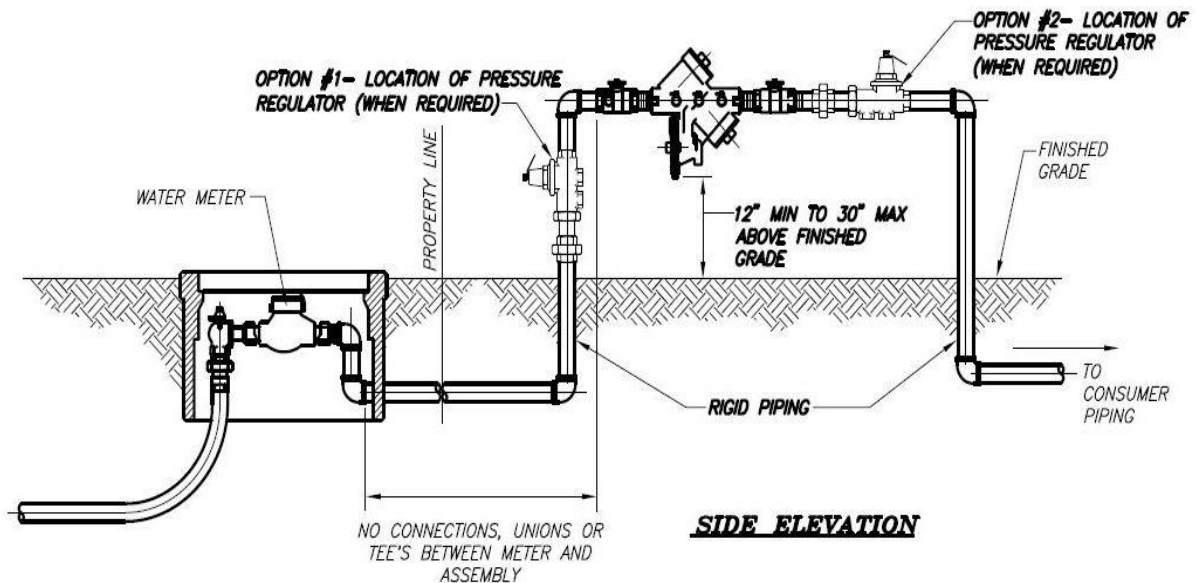
**INSTALLATION SPECIFICATIONS
FOR
REDUCED PRESSURE ZONE ASSEMBLIES
RPZ'S**



All RPZ (Reduced Pressure Zone Assemblies) backflow protection devices shall be located in an above ground insulated enclosure within 15 feet of the meter box, meter vault, or property line when not otherwise prohibited by conflict or barriers which make construction or access for maintenance unreasonable.

Above Ground Installation:

All above ground enclosures must be insulated with a drain at one end.



**TYPICAL INSTALLATION WITH MINIMUM CLEARANCES
REDUCED PRESSURE ZONE ASSEMBLIES (RPZ)**